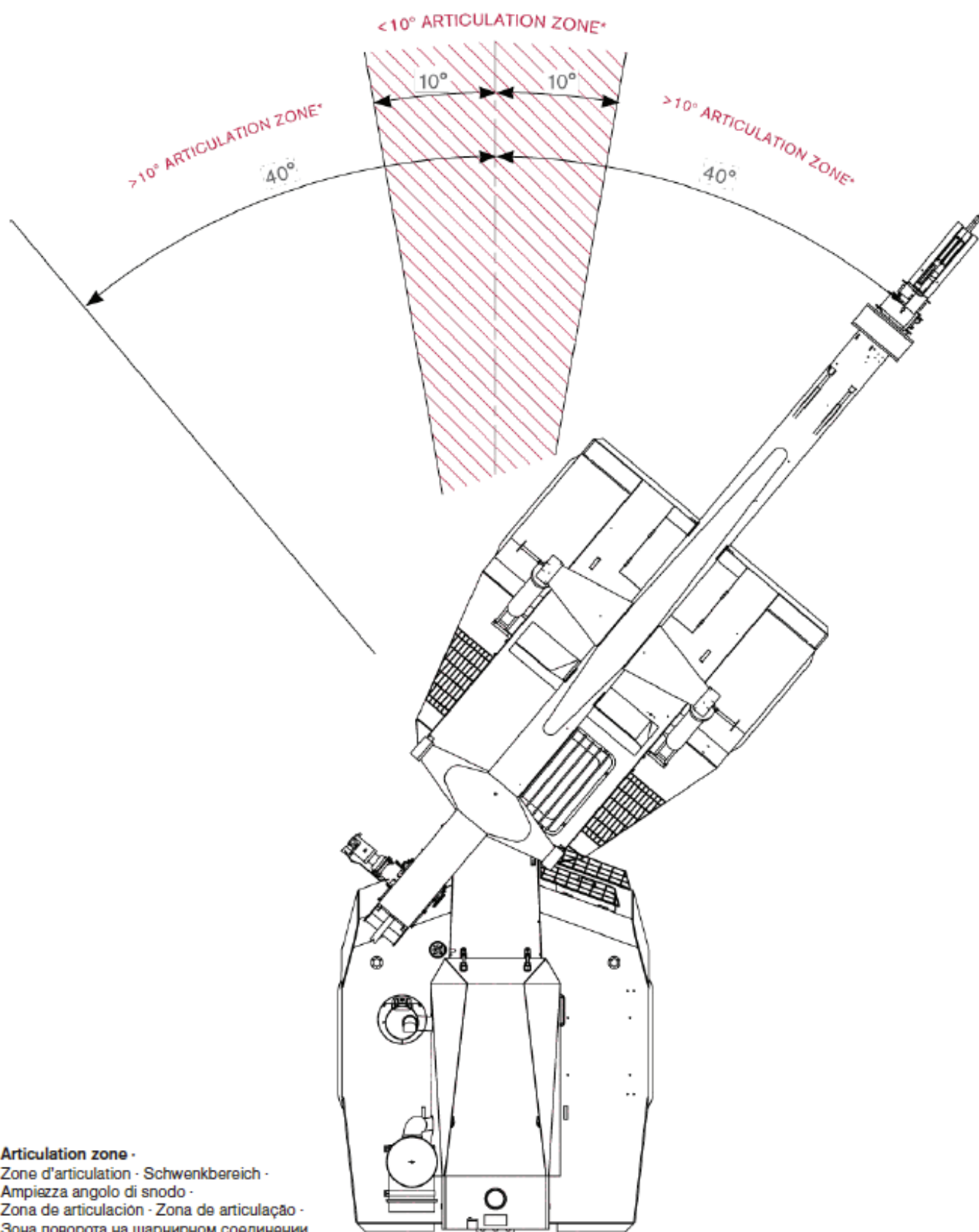




WILSONLIFT

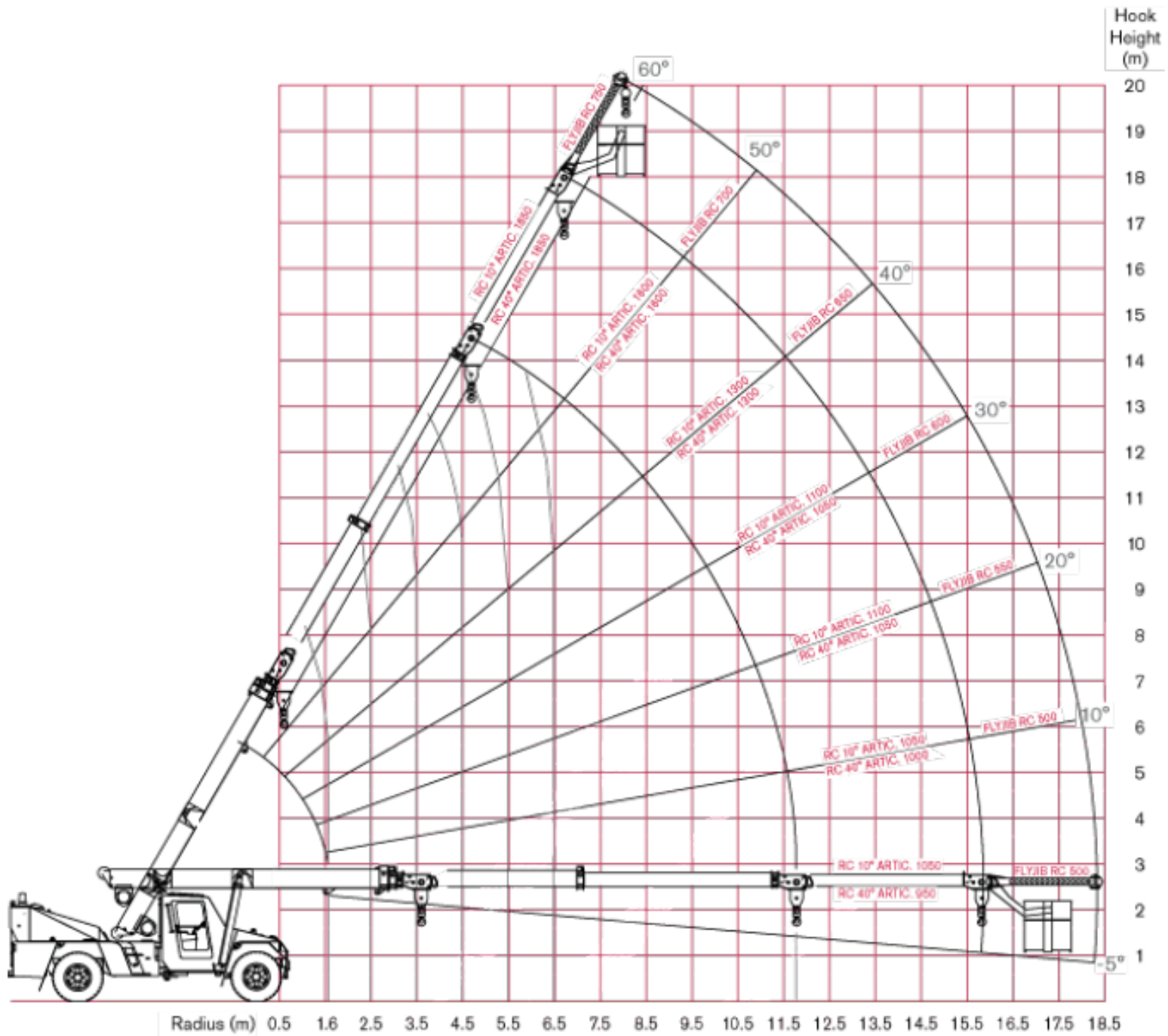
AT 15-3





WILSONLIFT

AT 15-3



15000	9800	7200	5400	4300	3500	2900	2400	2100	1800	1550	RC (KG) 10° ART.	10 TONNE REAR AXLE
14000	8800	6300	4800	3800	3000	2500	2100	1800	1600	1350	RC (KG) 40° ART.	